



FOR LEASE: Call for Pricing

Hillis Properties is pleased to offer this opportunity to lease this truck service facility and office with 3.77 fully fenced acres in the heart of the Jacksonville, FL industrial market. The property consists of a 8,847 s.f. service facility with 5 grade level overhead doors, 20' ceiling clearance and a parts department. The office is 3,177 s.f. with 3 offices, bullpen area and break room.

The Subject Property is centrally located between Ellis Road and Edgewood Avenue. Quick access to I-10, I-95 and I-295

Property Features

- ✓ 3.77 Industrial Light Acres
- ✓ 12,024 Total Square Feet
- ✓ 8,847 s.f. Shop
- ✓ 3,177 s.f. Office
- ✓ 20' Ceiling Clearance
- ✓ Great Westside Location

Contact:

Bob Hillis

☎ 904-716-9060

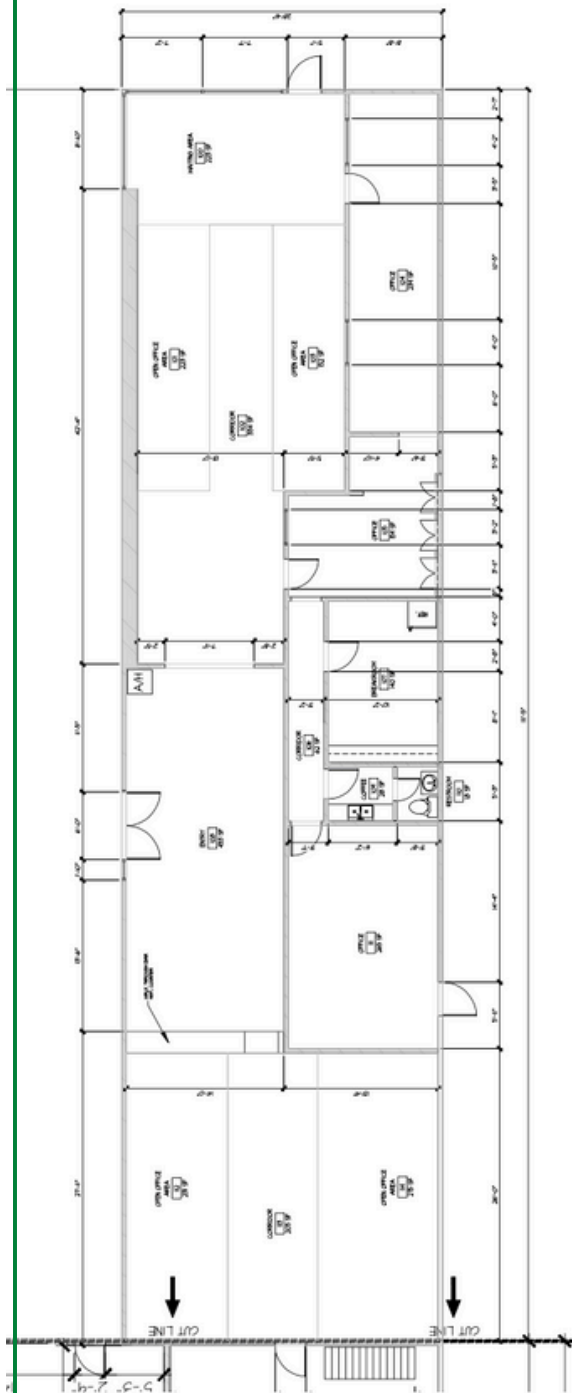
✉ Bob@hillisproperties.com

Bob Hillis
Hillis Properties
904-716-9060

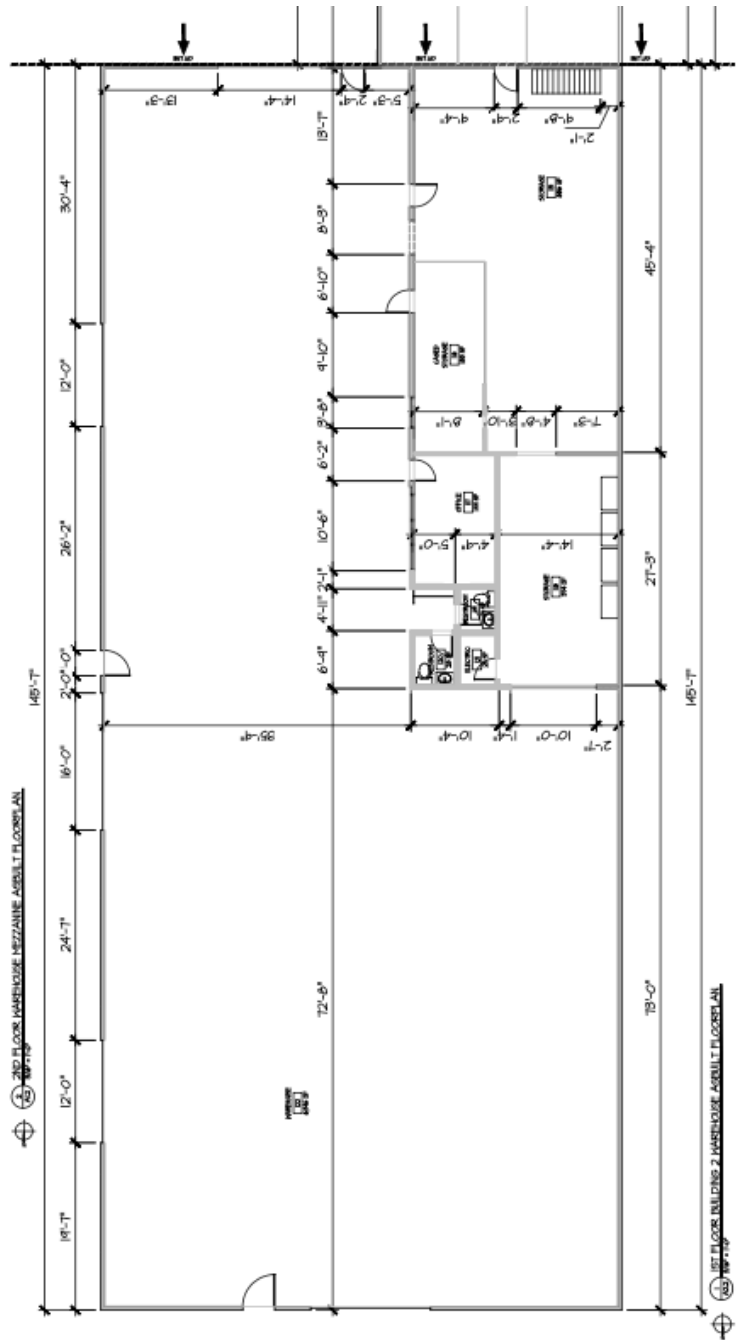


Bob Hillis
Hillis Properties
904-716-9060

Office Floor Plan



Shop Floor Plan



Bob Hillis
Hillis Properties
904-716-9060